

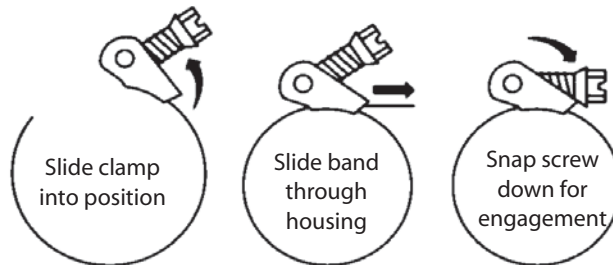


5235 Ted Street, Houston, Texas 77040,
713 / 462-7694, Fax 713 / 939-8441

STAINLESS STEEL CLAMP QUICK RELEASE LS SERIES



CLAMP	FLEX SIZE	CLAMP MIN.	DIA. MAX
LS-88	4	2.06	6.00
LS-88	5	2.06	6.00
LS-104	6	1.75	7.00
LS-128	7	1.75	8.56
LS-152	8	2.00	10.00
LS-152	9	2.00	10.00
LS-188	10	2.06	12.31
LS-216	12	10.19	14.00
LS-248	14	10.00	16.00
LS-280	16	14.25	18.00
LS-312	18	14.00	20.00
LS-344	20	16.00	22.00



Easy On....Easy Off...in 3 Simple Steps!

*Reverse procedure for quick release and removal.
No need to disassemble connection*

JOB NAME _____ LOCATION _____

ENGINEER _____ CONTRACTOR _____

JOB _____ P.O. NUMBER _____ SUBMITTED BY _____

COMMENTS _____