

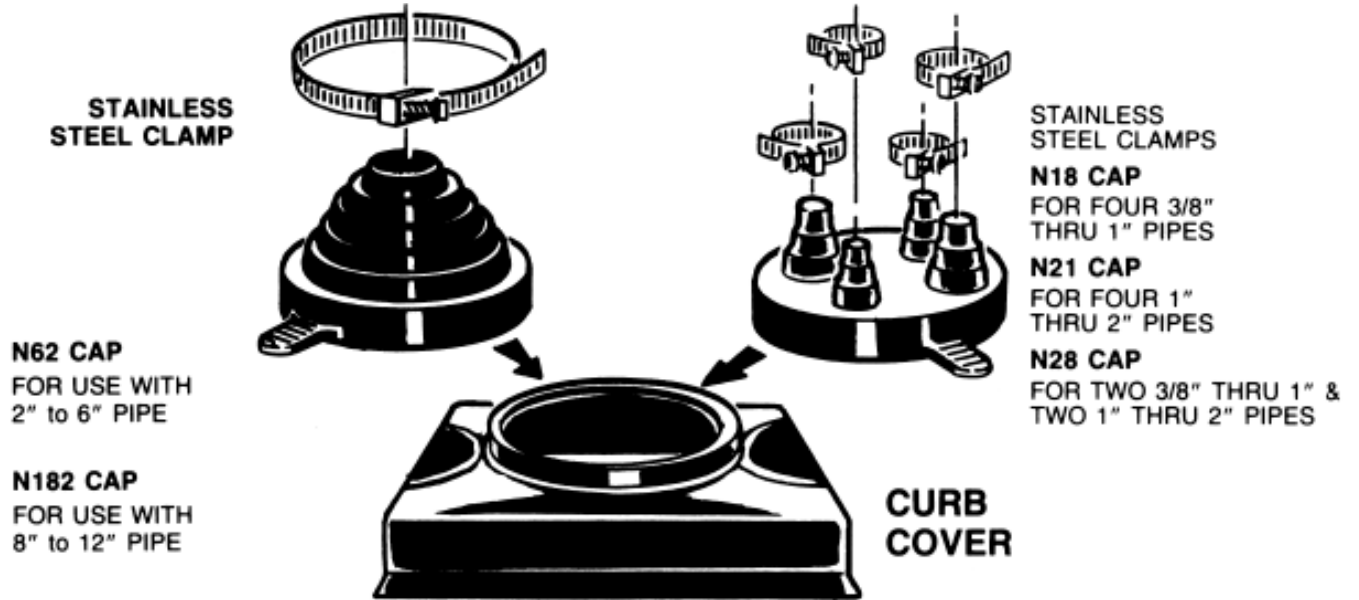


Pipe Flashing Systems

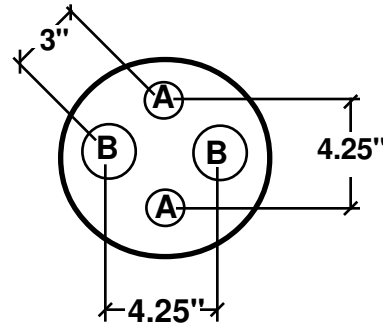
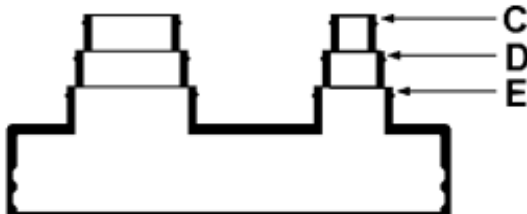
Technical Product Information

Pipe Portal® Cover and Caps

For pipe penetrations from 3/8" to 12"



PIPE LAYOUT REFERENCE CHART



| CAP MODEL | A | | | B | | |
|-----------|-------|------|----|-------|------|----|
| | C | D | E | C | D | E |
| N28 | .375" | .75" | 1" | 1" | 1.5" | 2" |
| N21 | 1" | 1.5" | 2" | 1" | 1.5" | 2" |
| N18 | .375" | .75" | 1" | .375" | .75" | 1" |



Pipe Flashing Systems

Technical Product Information

Pipe Portal® Systems Single & Multi Openings

P.O. NUMBER _____

CUSTOMER _____

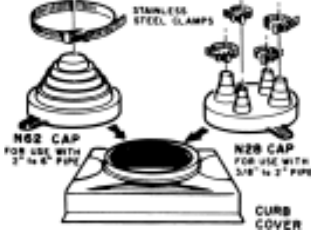
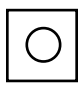
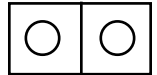
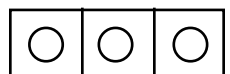

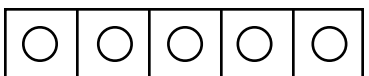
PROJECT _____

LOCATION _____

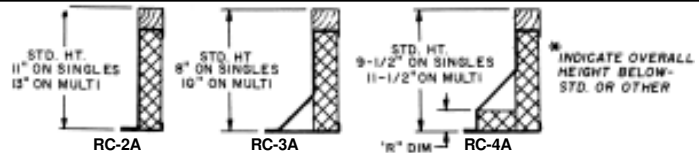
ARCHITECT _____

STANDARD CONSTRUCTION

- STANDARD RPS ROOF CURB
- 18 GAUGE GALVANIZED STEEL
- 1-1/2", 3LB. DENSITY FIBERGLASS INSULATION
- WOOD NAILER
- MOLDED ABS PLASTIC COVER
- MOLDED EPDM RUBBER CAP(S)
- STAINLESS STEEL CLAMP(S)

|  <p>N62- For one- 2" to 6" pipe . . . 13" x 13" I.D. reinforced ABS plastic cover . . . single nipped EPDM rubber cap . . . one large adjustable stainless steel clamp N18- For four- 3" to 1" pipes . . . N21- For four- 1" to 2" pipes . . . N28- For two- 3/8" to 1" and two- 1" to 2" pipes . . . 13" x 13" I.D. reinforced ABS plastic cover . . . four nipped EPDM rubber cap . . . two pairs adjustable stainless steel clamps</p> |  1 Opening O.D. = 12" x 12" |  2 Openings O.D. = 12" x 27-1/2" |  3 Openings O.D. = 12" x 43-1/2" |  4 Openings O.D. = 12" x 59-1/2" |  5 Openings O.D. = 12" x 75-1/2" | CURB QTY. | PIPE PORTAL | |
|---|--|---|--|---|---|-----------|-------------|------|
| | | | | | | | STYLE | QTY. |
| | | | | | | | N62 | |
| | | | | | | | N18 | |
| | | | | | | | N21 | |
| | | | | | | | N28 | |
| | | | | | | | N62 | |
| | | | | | | | N18 | |
| | | | | | | | N21 | |
| | | | | | | | N28 | |
| | | | | | | | N62 | |
| | | | | | | | N18 | |
| | | | | | | | N21 | |
| | | | | | | | N28 | |

PROJECT REQUIREMENTS



| TOTAL CURBS (FROM ABOVE) | CURB STYLE | * OVERALL HEIGHT | "R" DIM. | TOTAL PIPE PORTALS (FROM ABOVE) | | TAG |
|--------------------------|------------|------------------|----------|---------------------------------|--|-----|
| | RC-2A | | | N62 | | |
| | | | | N18 | | |
| | | | | N21 | | |
| | | | | N28 | | |
| | RC-3A | | | N62 | | |
| | | | | N18 | | |
| | | | | N21 | | |
| | | | | N28 | | |
| | RC-4A | | | N62 | | |
| | | | | N18 | | |
| | | | | N21 | | |
| | | | | N28 | | |