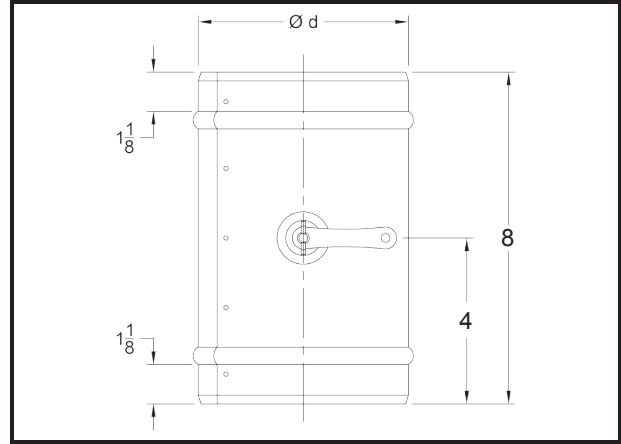


8" Long Coupler



Technical Data	
<ul style="list-style-type: none"> GSI Couplers are designed and tested to surpass SMACNA Class 3 Leakage Standards..* Galvanized Steel (ASTM A653 and A924) G-60 Galvanized Coating (ASTM A653 and ASTM A90) Available in Specialty Metals: <ul style="list-style-type: none"> G-90 Galvanized Steel Aluminum (ASTM B209 Alloy 3003 Temper H14) 304 Stainless Steel (ASTM A480 2B Finish) Pressure Rating: Designed per SMACNA Third Edition 2005 Section 4.8 Figure 4-6 Branch Connections Dimensional Tolerance: $\pm 1/4"$ 	

Product Availability				
Size (Ød)	Gauge Availability		Quantity	
	26 Ga.	24 Ga.	Carton	Skid
6"	Yes	Yes	12	144
7"	Yes	Yes	12	144
8"	Yes	Yes	12	144
9"	Yes	Yes	12	144
10"	Yes	Yes	12	144
12"	Yes	Yes	6	72
14"	Yes	Yes	6	72

Dampened fittings are available with 1½" or 2" Stand-Off. See Appendix C on page 28.

Part Number Schematic									
Example: 8COPR10GA26D = 8" Long Coupler for 10" pipe in 26Ga. Galvanized Steel with a Damper.									
8 Coupler Length	CO Tabbed Start Collar	S15 Stand-Off S15 - 1½" S2 - 2" (Opt. on Dampers Only)	P Plain End (Crimping Unavailable)	R Riveted	10 Coupler Diameter (Ød)	GA Material GA-Galvanized (Std.) AL - Aluminum S4 - 304 S.S	26 Gauge GA - 26, 24 AL - 32 S4 - 26	D Damper (Opt.)	C Wingate hardware 38 3/8" Solid Rod (Opt. on Dampers Only) See Appendix A on page 26.

Items in green denote available options
Check with your sales representative for availability of any size, gauge, or specialty metal item not shown here.
* Test performed on standard fittings without dampers.