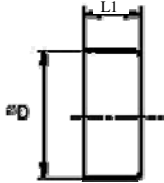


## End Caps



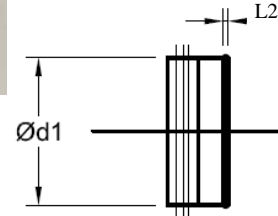
### Description

- end cap for fittings

### Ordering Example

Ungasketed, G-0    Type     $\frac{\varnothing D_1}{aa}$   
 EPF

## EPF/ESG



35

### Description

- end cap for spiral duct

### Ordering Example

Gasketed, G-3    Type     $\frac{\varnothing d_1}{aa}$   
 ESG

Ungasketed, G-0    Type     $\frac{\varnothing d_1}{aa}$   
 ES

$\varnothing D_1$ (in)	L1 (in)	L2 (in)	Weight (lb)
3	1 <sup>5</sup> / <sub>8</sub>	<sup>3</sup> / <sub>8</sub>	0.1
4	1 <sup>5</sup> / <sub>8</sub>	<sup>3</sup> / <sub>8</sub>	0.1
5	1 <sup>5</sup> / <sub>8</sub>	<sup>3</sup> / <sub>8</sub>	0.1
6	1 <sup>5</sup> / <sub>8</sub>	<sup>3</sup> / <sub>8</sub>	0.3
7	1 <sup>5</sup> / <sub>8</sub>	<sup>3</sup> / <sub>8</sub>	0.3
8	1 <sup>5</sup> / <sub>8</sub>	<sup>3</sup> / <sub>8</sub>	0.5
9	1 <sup>5</sup> / <sub>8</sub>	<sup>3</sup> / <sub>8</sub>	0.5
10	2 <sup>3</sup> / <sub>8</sub>	<sup>3</sup> / <sub>8</sub>	0.7
12	2 <sup>3</sup> / <sub>8</sub>	<sup>3</sup> / <sub>8</sub>	0.8
14	2 <sup>3</sup> / <sub>8</sub>	<sup>3</sup> / <sub>8</sub>	1.5
16	3 <sup>1</sup> / <sub>8</sub>	<sup>3</sup> / <sub>8</sub>	1.7
18	3 <sup>1</sup> / <sub>8</sub>	<sup>3</sup> / <sub>8</sub>	2.4
20	3 <sup>1</sup> / <sub>8</sub>	<sup>3</sup> / <sub>8</sub>	3.0
22	3 <sup>1</sup> / <sub>8</sub>	<sup>1</sup> / <sub>2</sub>	3.1
24	3 <sup>1</sup> / <sub>8</sub>	<sup>1</sup> / <sub>2</sub>	3.7