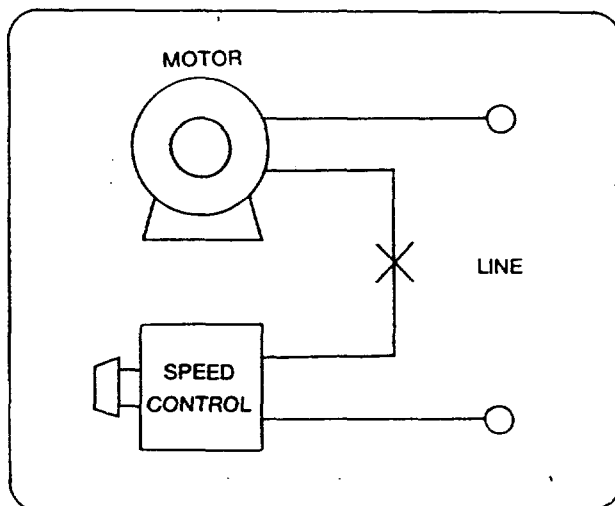
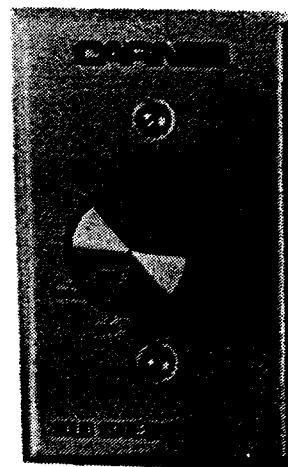
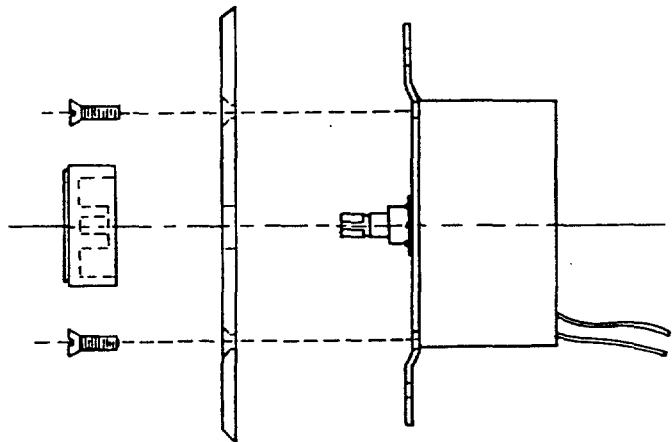


# CARNES®

## SPECIFICATION SHEET

### MODELS JXUA, JXVA, and JXWA SOLID STATE SPEED CONTROLS FOR VENTILATORS

CARNES COMPANY, 448 S. Main St., P. O. Box 930040, Verona, WI. 53593-0040 Phone: 608-845-6411 Fax: 608-845-6470



**JXUA** 120 Volt AC, 60 Cycle, 3 Amp. maximum.

**JXVA** 120 Volt AC, 60 Cycle, 6 Amp. maximum.

**JXWA** 120 Volt AC, 60 Cycle, 10 Amp. maximum.

**Application:** 1) Motor Type - Shaded Pole, P. S. C., and Universal.

2) Required Load - Fans, Blowers, and speed dependent loads.

**Wiring** - Connect control in series with motor and line voltage; never connect control across line. Leads: 2

**Mounting:** 1) Use 2" deep standard Gem Box.

2) Secure control with outer bracket tabs.

Minimum speed adjustment is factory set.

Face plate is anodized aluminum.

**CAUTION: DO NOT OPERATE FAN BELOW MINIMUM CATALOG RPM!**